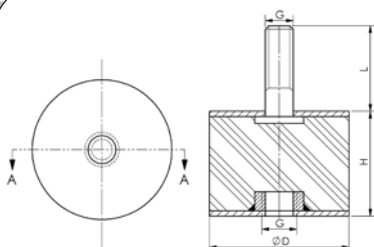


Rubber-metal buffers



Code	Dimension D	Dimension H	Dimension L	Thread G	Weight kg
HK GP 4030 M10 B	40	30	24	M10	0.30
HK GP 7540 M12 B	75	40	37	M12	0.50
HK GP 10040 M16 B	100	40	46	M16	0.80

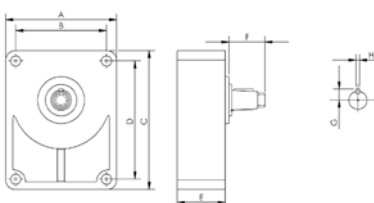
Other sizes and versions available on request

Additional front bearings

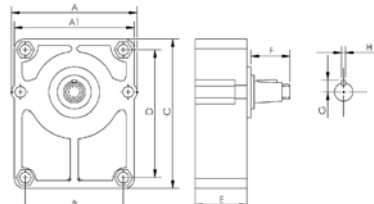


Additional front bearings are used on gear pumps which, for example, are belt or chain driven and so subject to higher radial loads. A suitable clutch hub is needed to connect the pump to the additional front bearing. (Please order separately!) Grease conforming to DIN 51502 is recommended for lubrication. Connection only for European standard pump.

HK SU 2D



für Baugröße 2



für Baugröße 3

Code	For pump	Shaft	Dimension										Requires clutch hub	Weight kg
			A	A1	B	C	D	E	F	G	H			
HK SU 2C	Size 2	Cylindrical Ø 18	88.5	--	71.4	113.0	96.0	49.0	40.0	9.5	3.2	HK BF 2T	1.4	
HK SU 2D	Size 2	Conical shaft 1:8	88.5	--	71.4	113.0	96.0	49.0	35.5	9.5	3.2	HK BF 2T	1.4	
HK SUR 2C	Size 2	Cylindrical Ø 22	94.0	--	71.4	120.0	96.0	52.0	46.0	9.5	4.0	HKBF2TZ15	1.8	
HK SUR 2D	Size 2	Conical shaft 1:8	94.0	--	71.4	120.0	96.0	52.0	36.0	9.5	4.0	HKBF2TZ15	1.8	
HK SU 3C	Size 3	Cylindrical Ø 24	124.5	120.0	98.2	150.0	128.0	52.0	48.0	12.0	4.0	HK BF 3	2.2	
HK SU 3D	Size 3	Conical shaft 1:8	124.5	120.0	98.2	150.0	128.0	52.0	43.0	12.0	4.0	HK BF 3	2.2	

Power take-off shaft gear

For european standard pump size 2

A clutch hub BF2T is needed to connect the pump to the gear.



HK ML32 11

Code	Max. input speed n1	Max. input moment M1	Max. output speed n2	Max. output moment M2	n2/n1	Drive side connection	Weight kg
HK ML32 11 3.8	540	159	2052	42	3.8	Male shaft - 1.3/8" - DIN 9611	4.0
HK ML32 21 3.8	540	159	2052	42	3.8	Female shaft - 1.3/8" - DIN 9611	4.3
HK ML32 31 3.8	540	159	2052	42	3.8	Female shaft with circlip - 1.3/8" - DIN 9611	4.3

For european standard pump size 3

A clutch hub BF3 is needed to connect the pump to the gear.



HK ML52 21

Code	Max. input speed n1	Max. input moment M1	Max. output speed n2	Max. output moment M2	n2/n1	Drive side connection	Weight kg
HK ML52 11 3.8	540	437	2057	115	3.8	Male shaft - 1.3/8" - DIN 9611	7.5
HK ML52 21 3.8	540	437	2057	115	3.8	Female shaft - 1.3/8" - DIN 9611	7.8
HK ML52 31 3.8	540	437	2057	115	3.8	Female shaft with circlip - 1.3/8" - DIN 9611	7.8

Clutch hubs



HK BF 2T

Code	Type	For pump	Number of teeth	Dimensions	Cone	Weight kg
HK BF 2T	BF 2 T	Size 2 - European standard pump	14	25 x 22	1:8	0.05
HK BF 2TZ15	BF 2 T Z15	Size 2 - European standard pump	15	28 x 25	1:8	0.06
HK BF 3	BF 3	Size 3 - European standard pump	18	35 x 31	1:8	0.1